

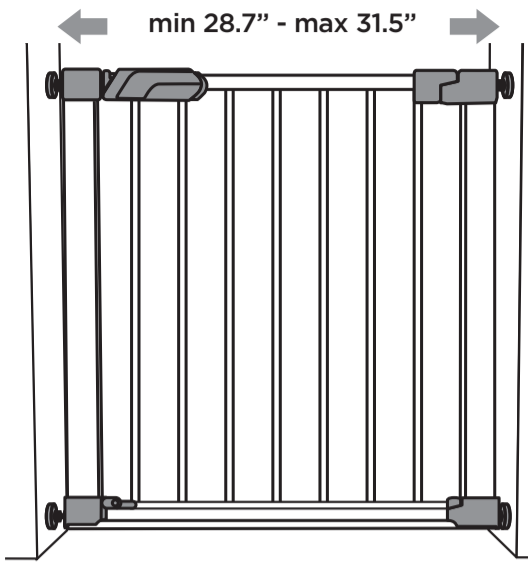
Safety 1st

WARNING:

- Children have died or been seriously injured when gates or enclosures are not securely installed. **ALWAYS** install and use gates or enclosures as directed using all required parts.
- **STOP** using when a child can climb over or dislodge the gate or enclosure.
- Use only with the locking mechanism securely engaged.
- This product will not necessarily prevent all accidents. Never leave child unattended.
- **NEVER** use to keep child away from pool.
- To prevent falls, **NEVER** use at top of stairs.
- **ALWAYS** install as close to the floor as possible.

CAUTION:

- Keep small parts away from children during assembly.
- **ALWAYS** check regularly to ensure gate and locking systems are secure. Tighten locking hardware as necessary. **DO NOT** over-tighten.
- **DO NOT** use gate if any parts are missing or broken. Contact Dorel Juvenile Group for replacement parts and instructional literature if needed.
- **DO NOT** substitute parts.
- Install according to manufacturer's instructions.
- Intended for use with children from 6 months through 24 months.



FLAT STEP GATE
Age: 6 to 24 months.
Adult assembly required.

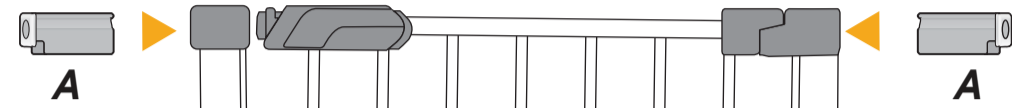
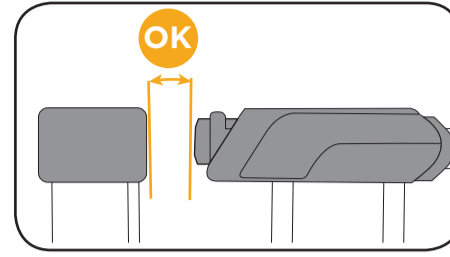
GA119

©2018 Dorel Juvenile Group, Inc. Safety 1st™ and the Safety 1st logo and design are trademarks of Dorel Juvenile Group, Inc. Safety 1st™ y el logotipo de Safety 1st y su diseño son marcas comerciales de Dorel Juvenile Group, Inc. (800) 544-1108 www.safety1st.com. Styles and colors may vary. Los estilos y los colores pueden variar. Made in CHINA. Hecho en CHINA. Distributed by (distribuido por) Dorel Juvenile Group, Inc., 2525 State St., Columbus, IN 47201-7494. Dorel Juvenile Canada, 2855 Argenta Road, Unit 4, Mississauga, ON L5N 8G6. Importado y Distribuido en Chile por: Comercial e Industrial Silfa S.A. - San Ignacio 0201 / Parque Industrial Portezuelo Quilicura, Santiago Chile. Fono (562) 2339 9000. En Perú por: Comexa S.A. - Los Libertadores 455 - San Isidro, Lima - Perú. Fono (511) 4469014. En Centro América, Caribe y Ecuador por: Best Brands Group S.A. - Av. Balboa, Bay Mall Plaza, Planta Baja, local 9, Panamá. - Fono: (507) 300 2884. En Colombia por: Baby Universe S.A.S. - Via 40 No. 77-29, Barranquilla, Colombia - Fono: (575) 353 1110 Importador: DIGM, S.A. DE C.V. Gabriel Mancera No. 1041 Col. Del Valle, Benito Juárez C.P. 03100 México, Ciudad de México R.F.C. DJG140305GN9 Tel. (55) 67199202 08/07/18 4358-7459

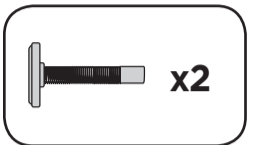
Care and Maintenance: DO NOT immerse in water. Wipe with a damp cloth and dry.

Parts List

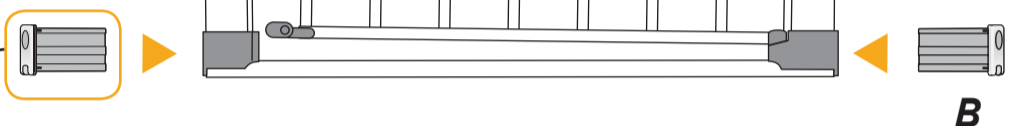
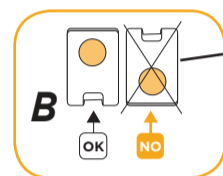
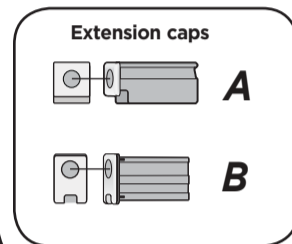
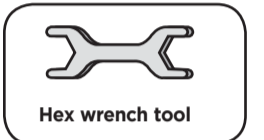
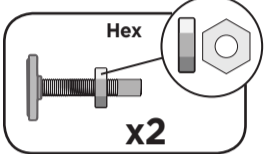
- Remove all contents from packaging and discard box, and/or poly bags.
- Lay out all parts.
- Do not return this product to the place of purchase. If any parts are missing, email support@djgusa.zendesk.com, or chat with us at www.safety1st.com. You can also call Consumer Care at (800) 544-1108. Have ready the model number (GA119) and date code (manufacture date) located on inside of gate panel.



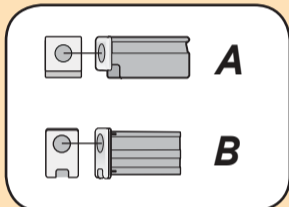
Top Post Assembly



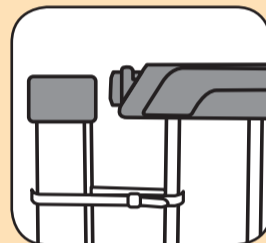
Bottom Post Assembly



Before you begin:



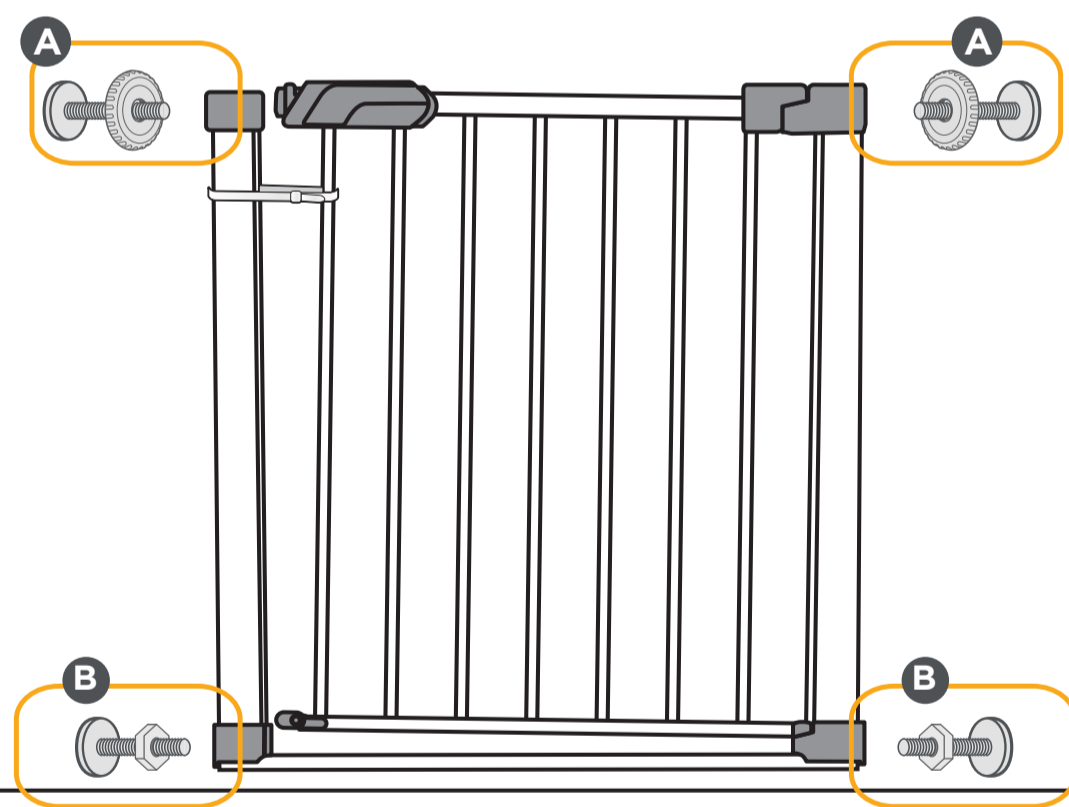
CHECK TO MAKE SURE THE EXTENSIONS CAPS ARE IN THE PROPER LOCATIONS (see Parts List)



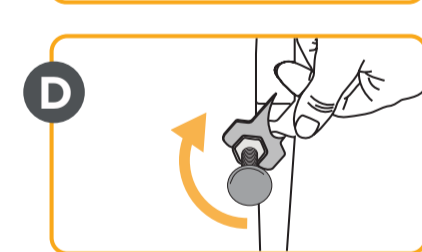
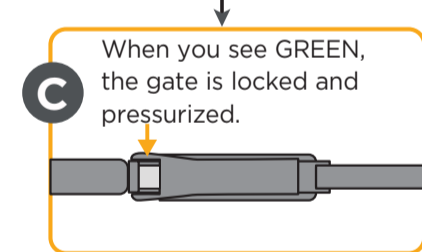
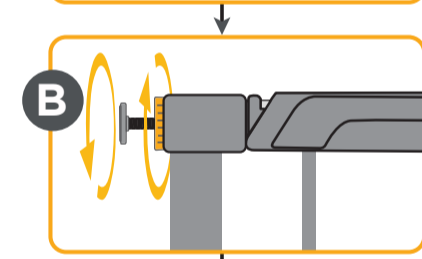
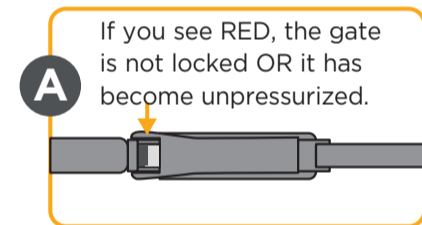
DO NOT REMOVE THE ZIP TIE UNTIL INSTALLATION IS COMPLETE

1 To Install

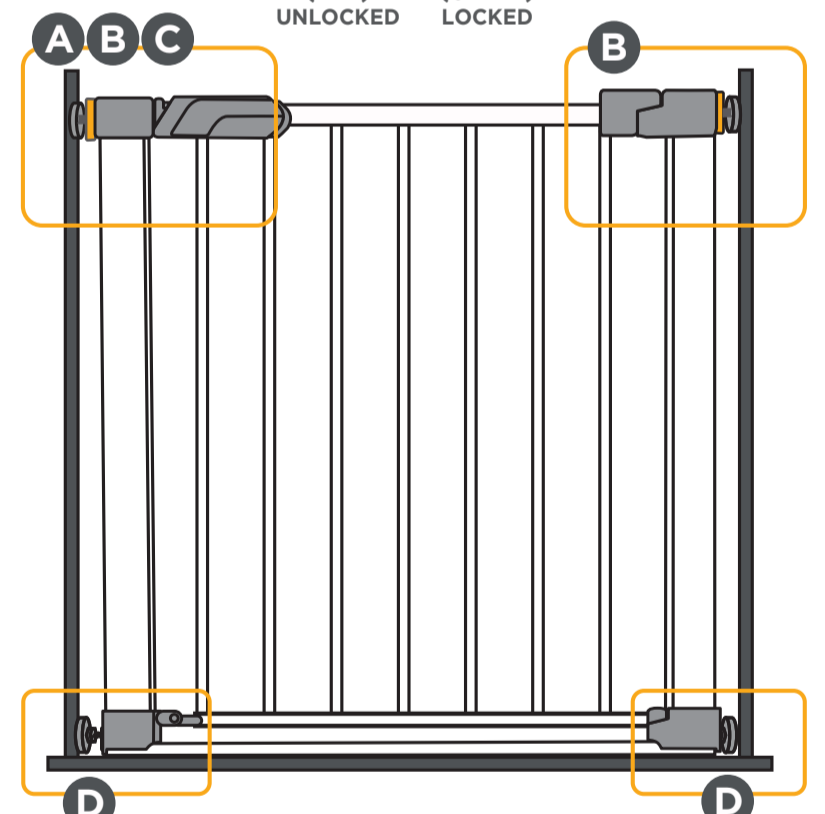
Insert all 4 pressure post assemblies in the proper locations.



2 Using the SecureTech™ indicator

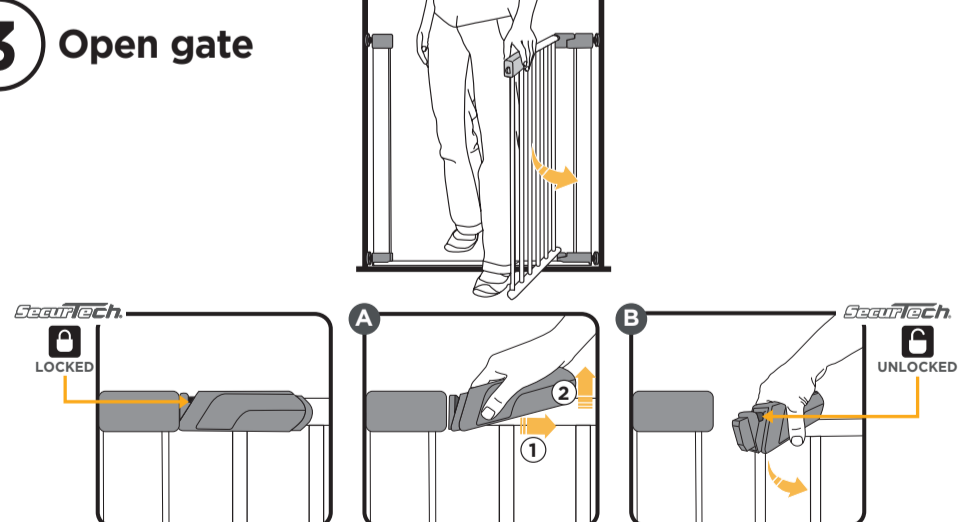


SecureTech™

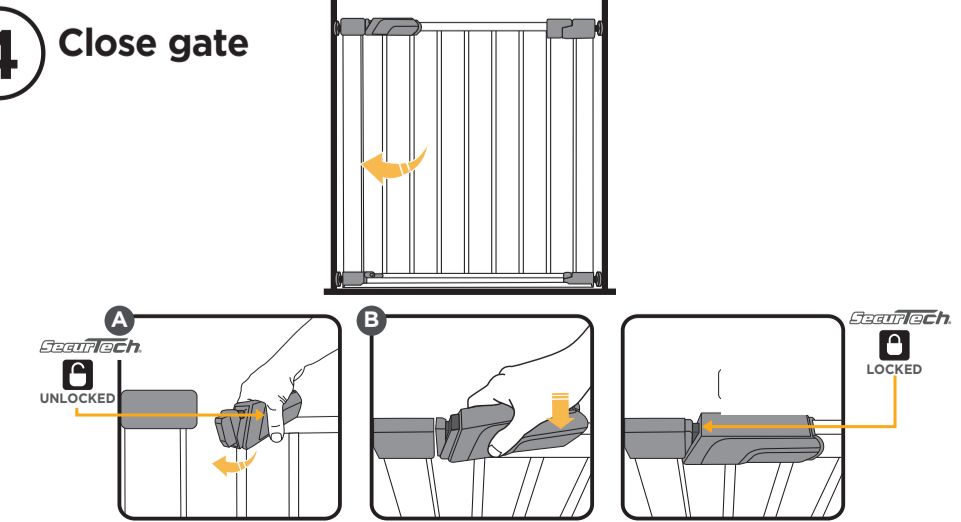


To Use

3 Open gate



4 Close gate



Optional: Using the swing stops

Gate will swing both ways unless one of the swing stops is down. Gate will not swing at all if both swing stops are down.

