

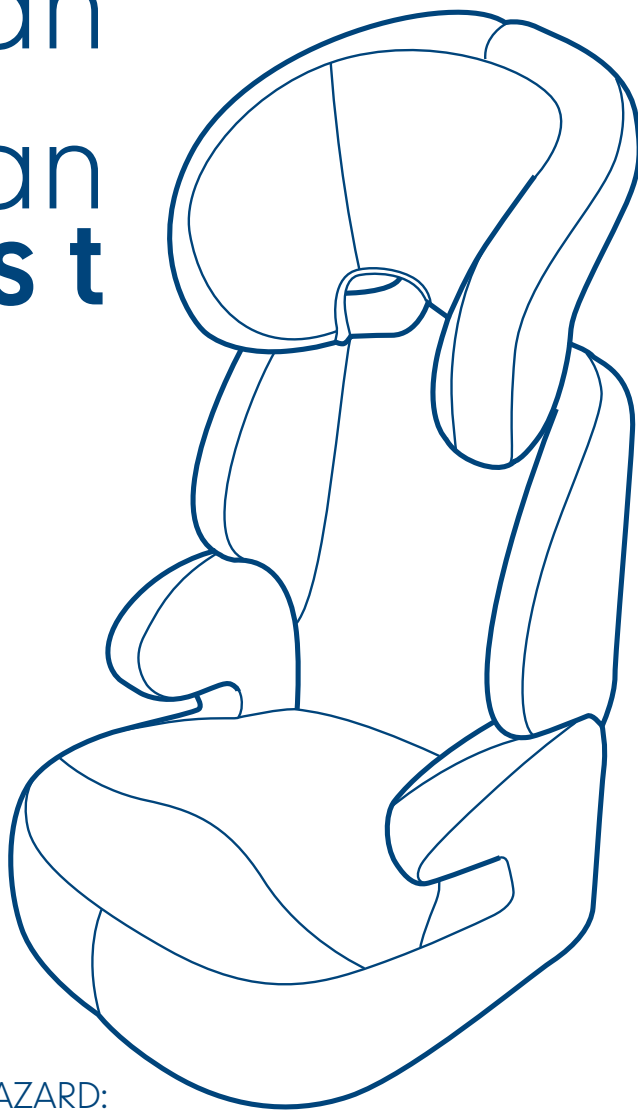


Conforms to
ECE R44/04

milan

milan
z e s t

user guide



EXTREME HAZARD:
Parents should not under any
circumstances use this child
restraint on a passenger seat
equipped with an airbag.

IMPORTANT ! KEEP FOR FUTURE REFERENCE

FC7715A

1

safety warnings

- PLEASE READ THOROUGHLY BEFORE COMMENCING INSTALLATION AS AN INCORRECT INSTALLATION COULD BE DANGEROUS.
- DO NOT USE THIS CHILD SEAT IN PASSENGER SEATS EQUIPPED WITH AIRBAGS.
- This child seat **must only** be installed in a forward facing position in passenger seats.
Do not use on side facing or rear facing seats.
- **Never** attempt to use this child seat without fastening it into the car as described in these instructions.
- **Do not** add to or modify the seat in any way, other than as described in these instructions.
- It is recommended that this car seat should be changed when it has been subjected to violent stresses in an accident or has become badly worn.
- **Do not** leave your child unattended in the seat at any time.
- Ensure that no part of the seat is trapped in a door or folding seat. If your car has a folding rear seat, ensure that it is correctly latched in the upright position.
- Car interiors can become very hot when in direct sunlight, it is therefore recommended that the child seat is covered when not in use. This prevents components, particularly those attached to the child seat, becoming hot and burning the child.
- Luggage and other heavy or sharp objects should be secured in the car. Loose objects are liable to cause injury in the event of an accident.
- The safest seating position for a child car seat is on the rear seat of a vehicle.

2

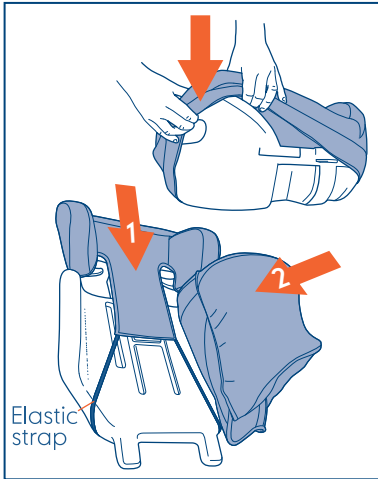
getting to know your child seat

This seat is classified as: **Group 2** for children weighing from 15kg to 25kg (4 - 6 years approx.) - in a forward facing position. **Group 3** for children weighing from 22kg to 36kg (6 - 11 years approx.) - in a forward facing position.



3

fitting the milan and milan zest cover



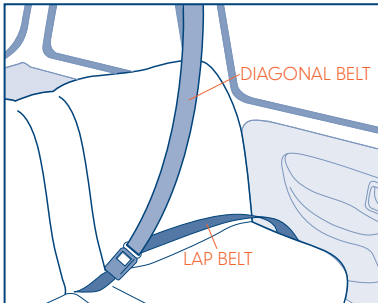
Your seat cover may be supplied separately to the plastic shell. To fit the cover to the shell, start first with the plastic base and base cover. From the front, slide the cover onto the shell making sure you slide the cover over the arms of the shell. Using the elasticated edges, make sure you have a tight fit.

Then fit the head support cover onto the plastic head rest ensuring that you first fit the elastic strap around the bottom of the plastic seat back (see diagram). Then fit the back cover to the plastic seat back. The seat covers are tailored to fit the plastic shells so you should attain a tight fit, which is secured with the elasticated edges.

Once the cover is fitted, refer to **Section 9** to assemble the base and back units.

4

the type of approved seat belt you must have



Your mothercare child seat can only be installed forward facing using a lap and diagonal seat belt in the front or in the rear passenger seats of the car.

DO NOT INSTALL THIS CHILD SEAT WITH A LAP BELT ONLY.

DO NOT USE THIS CHILD SEAT IN PASSENGER SEATS EQUIPPED WITH AIRBAGS

5

legal requirements

This child seat is approved to ECE R44.04 and is **ONLY** suitable for use with a 3 point lap and diagonal seat belt, approved to UN/ECE Regulation No.16 or other equivalent safety standards.

front seat

Anyone, especially children, travelling in the front seat of a car **must** be properly restrained. Children under three years **must** use a suitable approved restraint designed for their weight.

rear seat

All adults and children **must** use seat belts or child restraints where they are fitted in the rear of a car and are available for use. If the appropriate restraint is not available, children from 3 years **must** wear an adult seat belt if available.

6

important notes

- This user guide should be stored under the seat cover of the base.
- When the child seat is not in use, it is recommended that it is fastened into the car with a seat belt to avoid being thrown about in the event of an accident.
- If you travel with passengers using both the front and rear seats, the lighter occupants should be in the rear seats and the heavier occupants in the front of the vehicle. When a child is in the front seat, the lighter passenger should be behind the child.
- **Do not** allow the child seat to come into contact with corrosive substances e.g. battery acid.

7

fitting your child seat into your car

Group 2 - To set up for use from 15kg to 25kg

fig 1

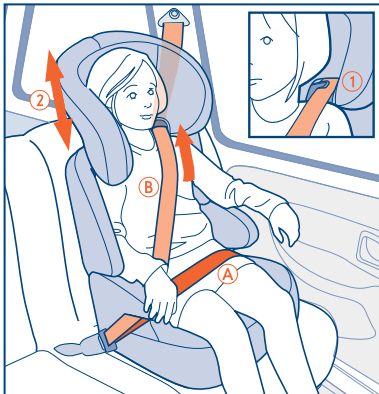


Place the car seat in a vehicle seat with a lap and shoulder belt system. **WARNING:** do not place the car seat in a seating position that only provides a lap belt (such as the center rear seat on many vehicles).

Position the booster firmly against the vehicle seat back.

Position the child with their back flat against the seat back.

fig 2



Pull the vehicle lap and shoulder belt across the front of child and fasten buckle. Position vehicle lap belt under both armrests and adjust until a snug fit.

Route the vehicle shoulder belt **under** the armrest (as shown) and into the shoulder belt guide **1**.

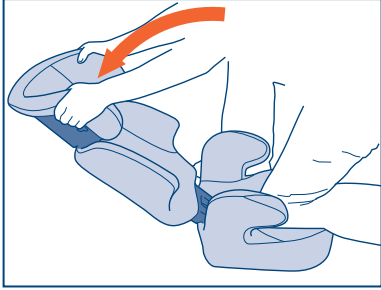
- The lap belt **A** must be low on the hips, contacting the thighs.

- The shoulder belt **B** must contact the chest and be centred on the shoulder.

Raise or lower head rest **2** until vehicle shoulder belt is on child's shoulder.

Group 3 - To set up for use from 22kg to 36kg

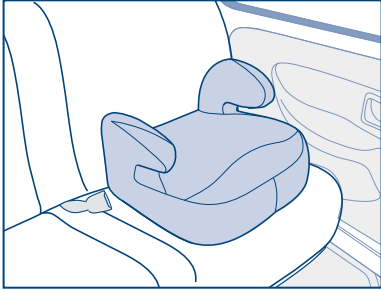
fig 1



The child seat can be used as a 'booster seat' for children over 22kg by removing the back section of the seat.

To remove seat back, place the car seat on the floor. While holding the base, push the seat back rearward and lift the back from the base.

fig 2



Place the booster in a vehicle seat with a lap and shoulder belt system. **WARNING:** do not place the booster in a seating position that only provides a lap belt (such as the center rear seat on many vehicles).

Position the booster firmly against the vehicle seat back.

fig 3



Position the child with their back flat against vehicle seat back. Pull the vehicle lap and shoulder belt across the front of child and fasten buckle. Position vehicle lap belt under both armrests and adjust until a snug fit. The shoulder (diagonal) belt should be routed **over** the armrest and over the child's chest.

- The lap belt **A** must be low on the hips, contacting the thighs.
- The shoulder belt **B** must contact the chest and be centred on the shoulder.

However safe a child seat is, however well built it is, your child's safety depends on you. Read this final checklist once you have fitted your child seat in your car.

Check that your child seat is secure before each journey.

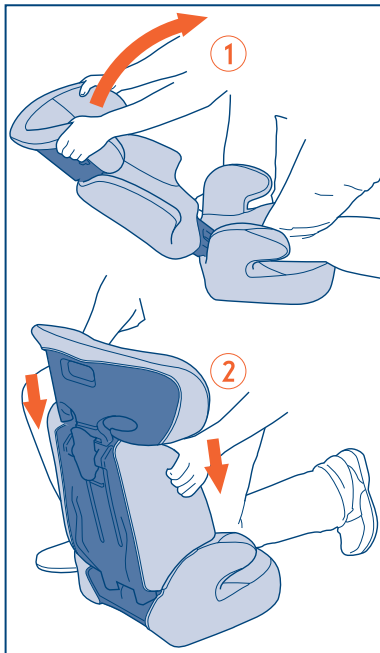
Check that both the lap and diagonal sections of the vehicle seat belt are correctly positioned.

REMEMBER: mis-using your child seat will reduce the protection and safety you offer your child.

IF YOU ARE UNSURE ABOUT THE FIT OF YOUR CHILD SEAT, PLEASE VISIT YOUR LOCAL MOTHERCARE STORE FOR ADVICE.

TO ASSEMBLE THE SEAT AFTER YOU HAVE FITTED YOUR ZEST COVER FOLLOW THE GUIDELINES BELOW.

AFTER YOU HAVE USED THE CHILD SEAT FOR AN OLDER CHILD (GROUP 3) YOU MUST FOLLOW THE GUIDELINES BELOW WHEN RE-USING THE SEAT FOR A YOUNGER CHILD (GROUP 2).



To install seat back: Place booster car seat base on the floor or other firm surface. Holding seat back slightly reclined, place tabs at bottom of seat back into slots of seat base.

Push seat back into an upright position **1**.

Press down firmly until wings on side of seat back touch arms on seat base **2** and tabs fully engage with slots in base.

10

care of your product

removing the fabric cover

- The fabric cover can be removed from the seat. Release the elasticated edges of the cover from the seat. Carefully remove the cover. Please refer to the sewn in label for care instructions.

cleaning the seat

- The plastic parts can be sponged with a mild detergent and warm water. Dry thoroughly before use.

11

accessories & replacement parts

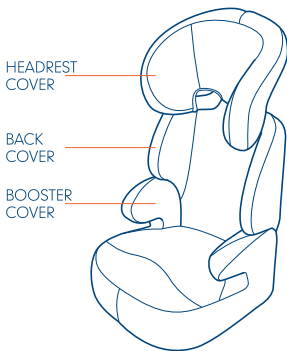
Your child seat and its cover have been carefully designed, manufactured and tested to the highest safety standards.

Do not put your child's safety at risk by using without a seat cover. The seat cover should not be replaced with any other than the one recommended by mothercare, because the cover constitutes an integral part of the restraint performance.

The safety of this seat may be compromised by the use of accessories not approved by mothercare. The replacement parts listed below are available for your product. In the event that you require any of these parts, please contact your local mothercare store or contact Customer Care on 08453 30 40 30.

Replacement Parts

- Booster cover
- Back cover
- Head rest cover



12

customer care

If you have a problem with this product or require replacement parts, please contact your nearest mothercare store or telephone the mothercare Customer Care Line on 08453 30 40 30.

Alternatively, write to: Customer Care
Mothercare Uk Ltd,
Cherry Tree Road
Watford, Herts,
WD24 6SH

notice

1. This is a 'Universal' child restraint. It is approved to Regulation No. 44.04 series of amendments, for general use in vehicles and it will fit most, but not all car seats.
2. A correct fit is likely if the vehicle manufacturer has declared that the vehicle is capable of accepting a 'Universal' child restraint for this age group.
3. This child restraint has been classified as 'Universal' under more stringent conditions than those which applied to earlier designs which do not carry this notice.
4. If in doubt, consult either the child restraint manufacturer or the retailer.
5. Only suitable if the approved vehicles are fitted with 3 point static or retractor safety belts approved to UN/ECE Regulation No.16 or other equivalent standards.