



# Princess Castle Play Tent with Lights

## instructions

147647  
Early Learning Centre®  
Watford WD24 6SH England

Customer Service Department  
0871 231 3511



Made in China.  
Retain this information for future reference.  
Colour and specification of product may vary from that illustrated.

REF: INS.168EAR-EL 17/10/17

**PLEASE READ ALL INSTRUCTIONS AND WARNINGS BEFORE ASSEMBLY**

Take care when folding / unfolding, this product contains an internal spring frame.

**WARNING!**

- Adult supervision required.
- Adult assembly required.
- **IMPORTANT!** The putting up and taking down of this product should always be done by an adult.
- The product has an internal spring frame that will 'pop' open with some force.
- Always place on a cleared flat surface away from sharp object and stones.
- Never shelter in this product during a thunderstorm.
- Not waterproof or made for camping.
- Do not continue to use this product if any part of the frame becomes either bent or broken.
- **IMPORTANT.** Wipe clean only.
- Remove all packaging before giving to your child.

**TIP** - If the product refuses to "pop" back into shape: - follow the steel around the frame sleeve with your fingers, and "twist & flip" the steel band back around into alignment.

**Assemble**

The assembly instructions are shown in seven numbered steps:

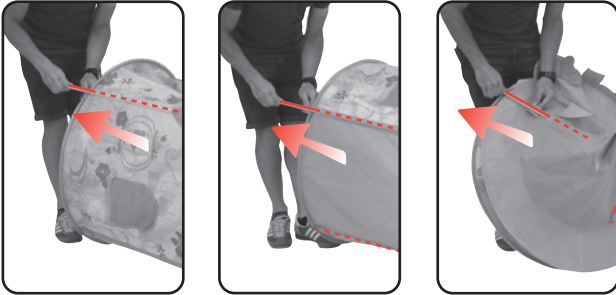
- Step 1:** A person is shown holding the tent's base, with a warning icon indicating to be careful.
- Step 2:** The person is shown pulling the tent upwards to begin unfolding it.
- Step 3:** The person is shown pulling the tent further up, causing it to pop open.
- Step 4:** A diagram shows the internal spring frame being inserted into the tent's sleeve. A checkmark indicates the correct orientation, and a red 'X' indicates an incorrect orientation.
- Step 5:** A diagram shows a person attaching a pole labeled 'A' to the tent's sleeve labeled 'B'.
- Step 6:** A diagram shows a person attaching a pole labeled 'C' to the tent's sleeve labeled 'D'.
- Step 7:** A diagram shows a person adjusting the pole labeled 'C' to the sleeve labeled 'D'.

A separate diagram shows the light switch mechanism. It includes a close-up of the switch being inserted into the tent's base, a photo of the tent with the switch installed, and a circular switch with an 'ON/OFF' label. Below this, three numbered steps show how to use paper clips to hold the switch in place:

1. Insert the switch into the tent's base.
2. Use a paper clip to hold the switch in place.
3. Use a second paper clip to hold the switch in place.

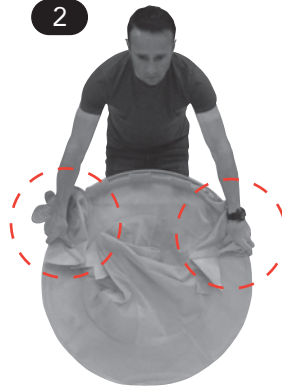
## Fold Away

1



• Remove all poles before folding away.

2



• Hold as shown.

3



• Push downwards and let product curve outwards.

4



1



• Still pushing down, twist your right hand inwards and then follow with the left hand allowing the edges to overlap.

2



3



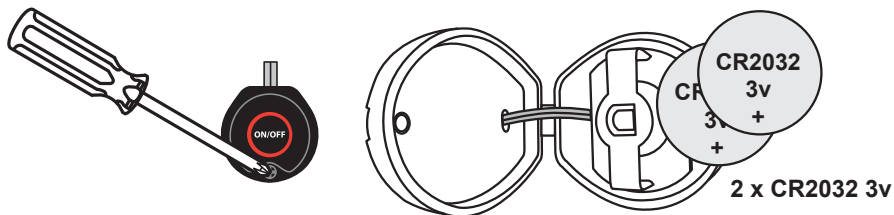
• Fold down the remaining coil.

4



• Fold flat and replace into warning band.

5



**Warning:** This product contains a coin cell battery. A coin cell battery can cause serious internal chemical burns if swallowed.  
**Warning:** Dispose of used batteries immediately. Keep new and used batteries away from children. If you think batteries might have been swallowed or placed inside any part of the body, seek immediate medical attention.