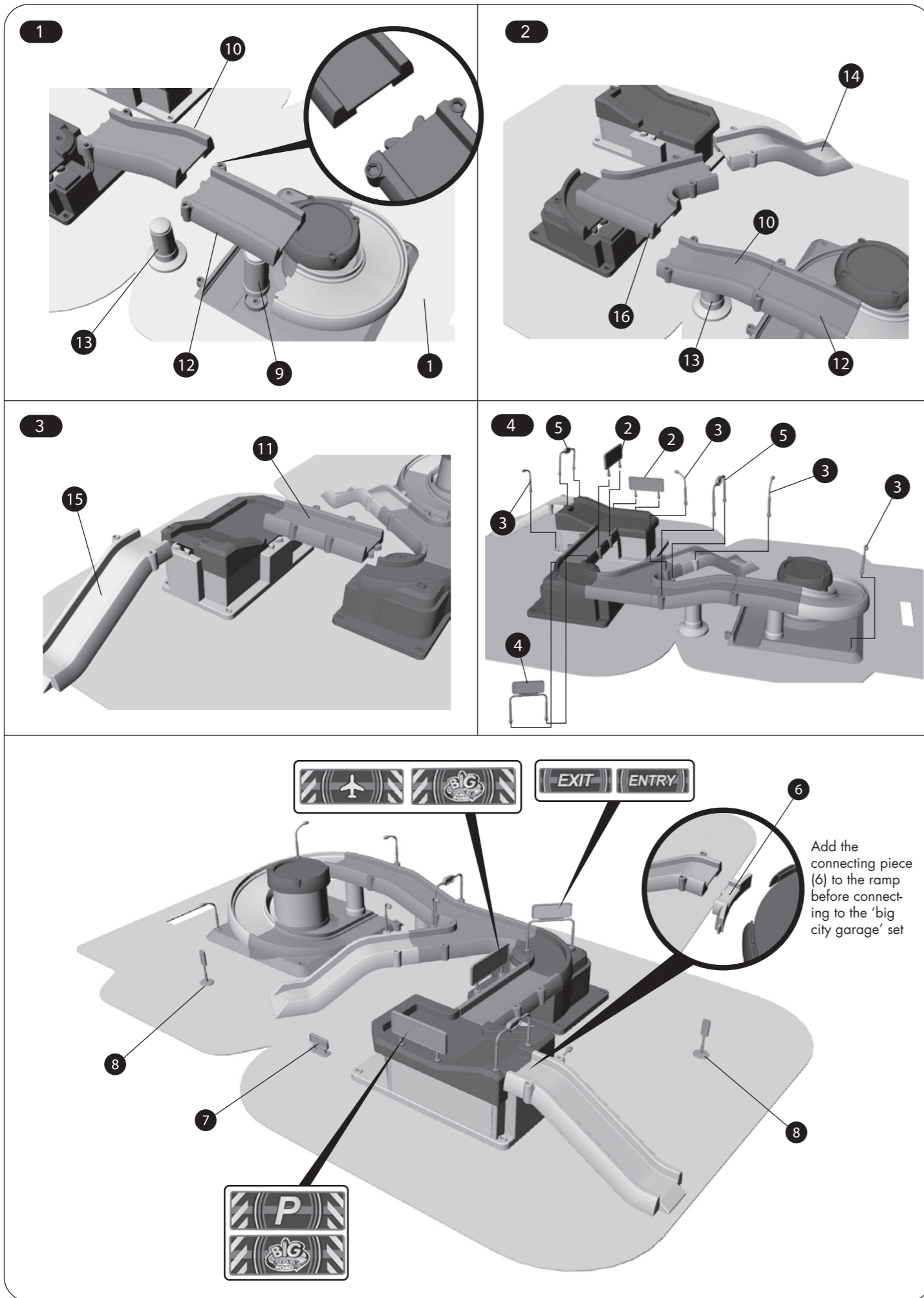


assembly

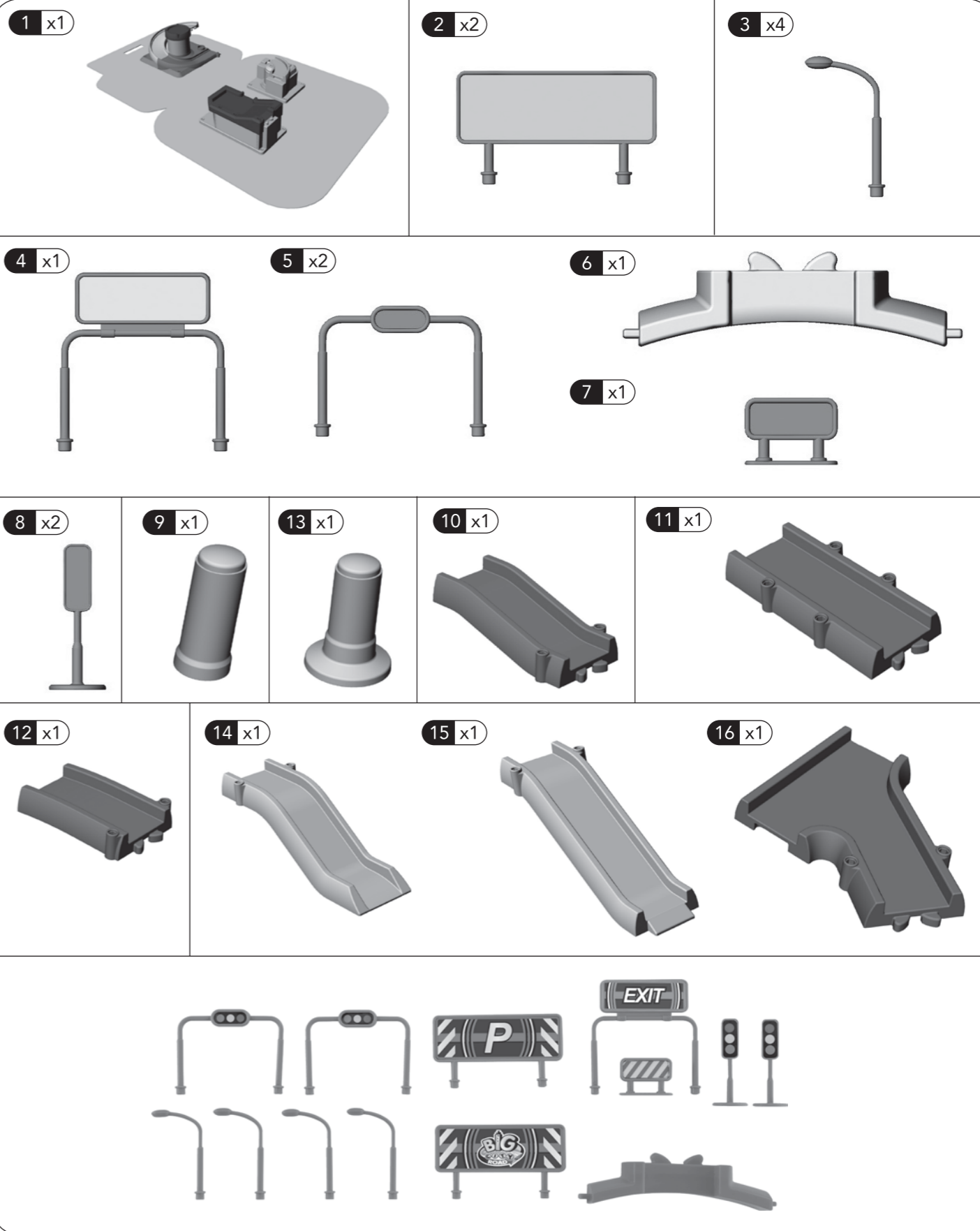


carry along city
user guide

143435 0316
Early Learning Centre®
Watford WD24 6SH England.

Customer Service Department
0371 231 3513

content



early learning centre AW15

sku number : 143435
product : Carry Along City instruction manual
pack dimensions : A4
supplier : Gemton category : A&A
date : 23 Mar 2016 designer : Man

colours:



approval	date	signature
packaging manager		
copywriter		
QA		
product manager		

NOTE: The spot colour is not accurate (simulated using CMYK) in this digital proof, please refer to the Pantone specification (or our colour key).