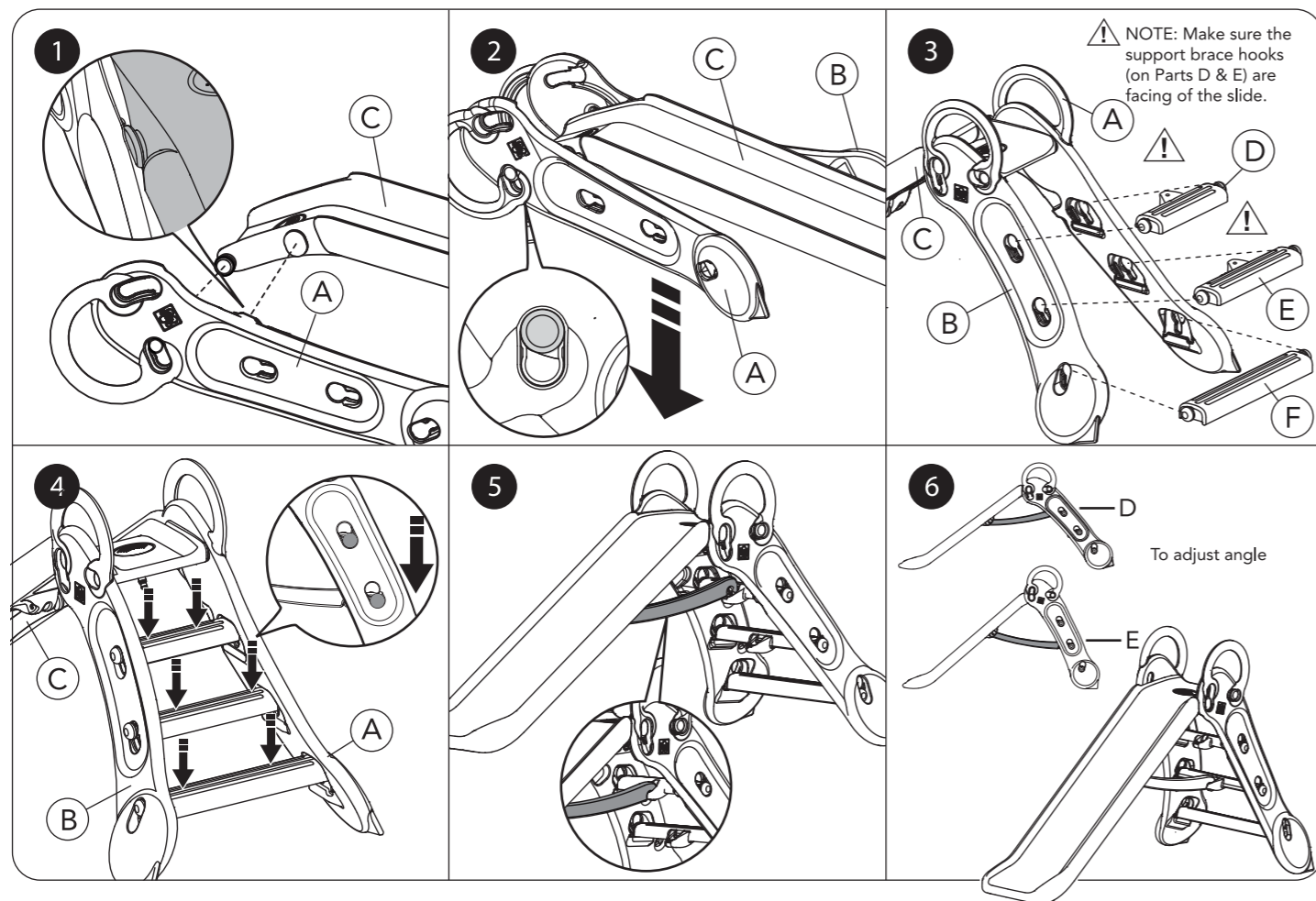
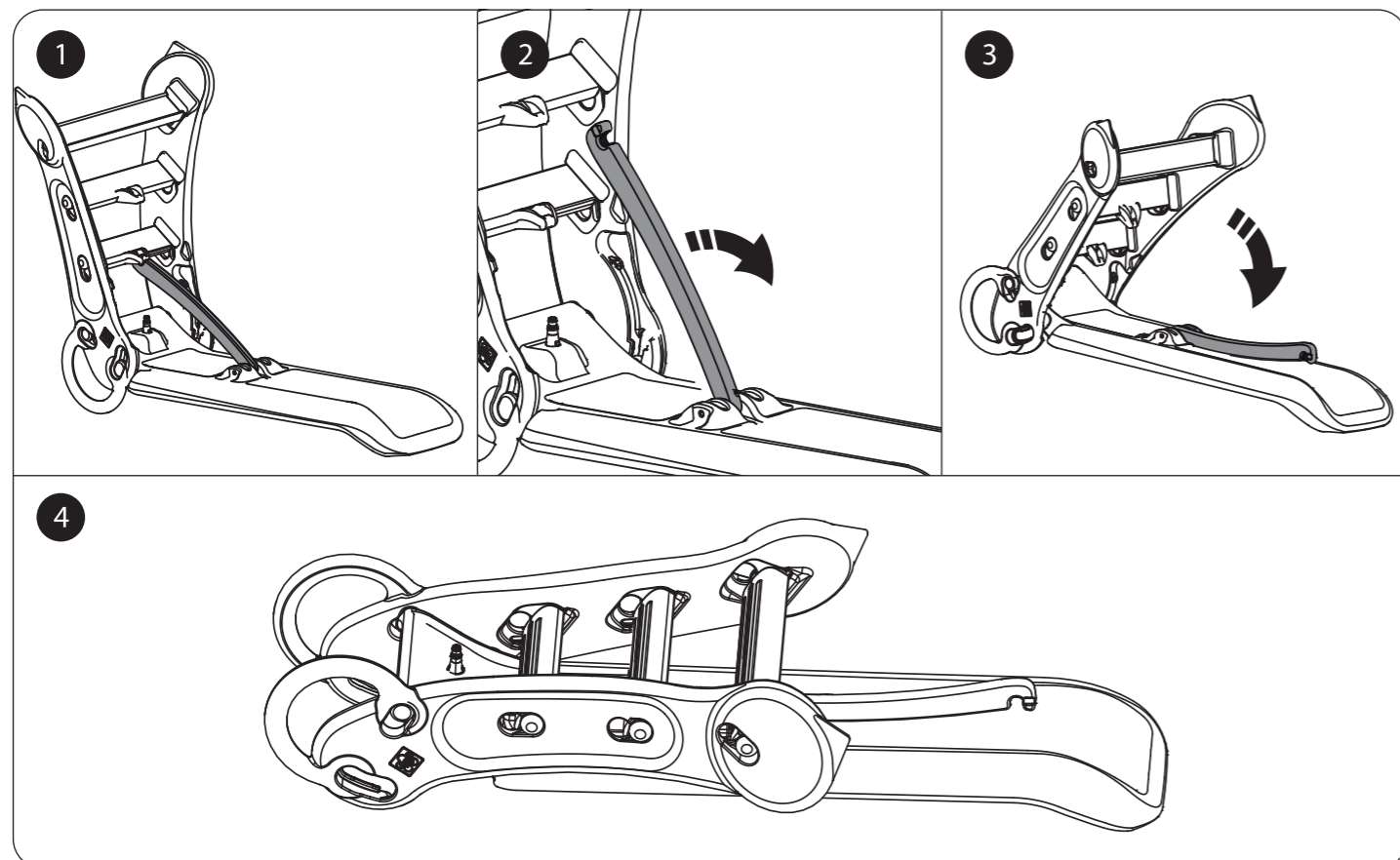


## assembly



## fold for storage

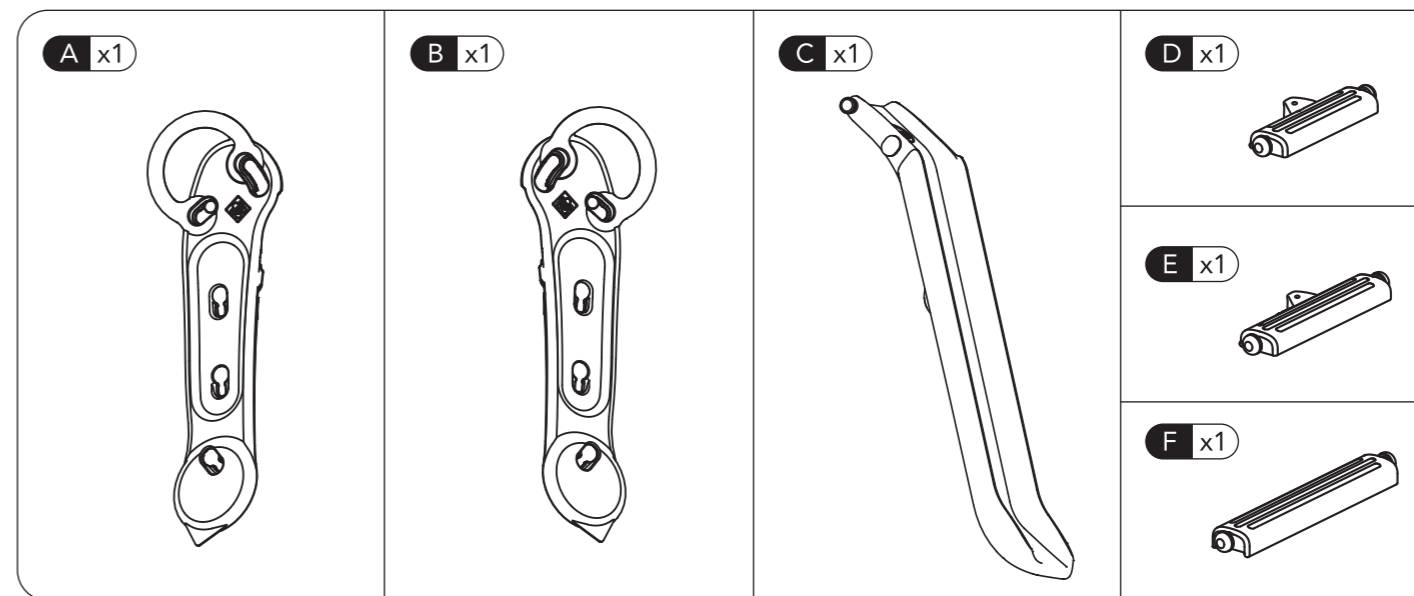


## large slide user guide

142639 1215  
Early Learning Centre®  
Watford WD24 6SH England.

Customer Service Department  
0371 231 3513

## contents



## warnings

- **Caution:** To avoid serious injury - DO NOT install this product on a hard surface. Fall onto hard surfaces could result in head or other serious injuries. Never put on concrete, asphalt, wood, packed earth or other hard surfaces. Carpet over hard floors may not prevent injury.
- Folding and unfolding of this product must be performed by an adult.
- Warning. For family and domestic use only. Suitable for indoor and outdoor use. Use water sprinkler function only during outdoor.
- This item should be used on flat areas only.
- Place this product on level ground and at least 2 metres away from a fence, building, overhead branches, laundry lines or electrical wires.
- NEVER attached any materials that are not specifically designed for use with this product, such as (but not limited to) jump ropes, clothes lines, pet leashes, cables and chairs. These pose potential strangulation hazards.
- Instruct children on proper use of this product, only after properly installed and assembled, and not in any manner other than intended. Adult supervision required at all time. DO NOT leave children unattended.
- DO NOT allow children to climb on the product when the product is wet. Slippery can results in slip or potential fall.
- DO NOT allow children to wear loose-fitting clothing including ponchos, scarves and garments with drawstrings. Well fitting shoes must be worn at all time.
- When temperatures fall below 0°C, outdoor use of this product is not recommended. In extreme cold, plastic materials lose resilience and may become brittle and crack upon impact. Store product in a warmer, protected place.
- It is recommended to place the slide out of direct sunlight to reduce the likelihood of serious burns and injure child's eyes. A slide that faces north will receive the least direct sunlight.
- Slide feet first. Never head first.
- Maximum weight limit: 50 kg per child. Limit one child (1) at a time.
- Please keep the assembly and installation instructions for further reference.

### FOR WATER PLAY

- Attach a 19 mm water hose to the nozzle of the water sprinkler (underside of the slide chute). After proper connection, turn on the tap or faucet for water play. After play, turn off the tap or faucet first before detaching the hose.
- Always disconnect the hose from the slide unit if water play is not required.

### CARE AND MAINTENANCE

1. Make sure all parts are securely snapped together before use.
2. Please check the unit twice monthly during the season its being used, to ensure that it is still correctly assembled. If not checked regularly, parts can become unassembled during play and cause injuries.
3. If slide chute is exposed to direct sunlight, always check to make sure it is not too hot for children to use. If the slide chute is hot, pour cold water on the slide chute until it cools. Check slide chute periodically during use.
4. Clean the slide regularly with soapy water in order to avoid a build up of static electricity.
5. DO NOT leave this item exposed to strong wind and inclement weather.