



UV sun tent

instructions

133014

Early Learning Centre®
Watford WD24 6SH England

Customer Service Department
0871 231 3511

Made in China.
Retain this information for future reference.
Colour and specification of product may vary from that illustrated.

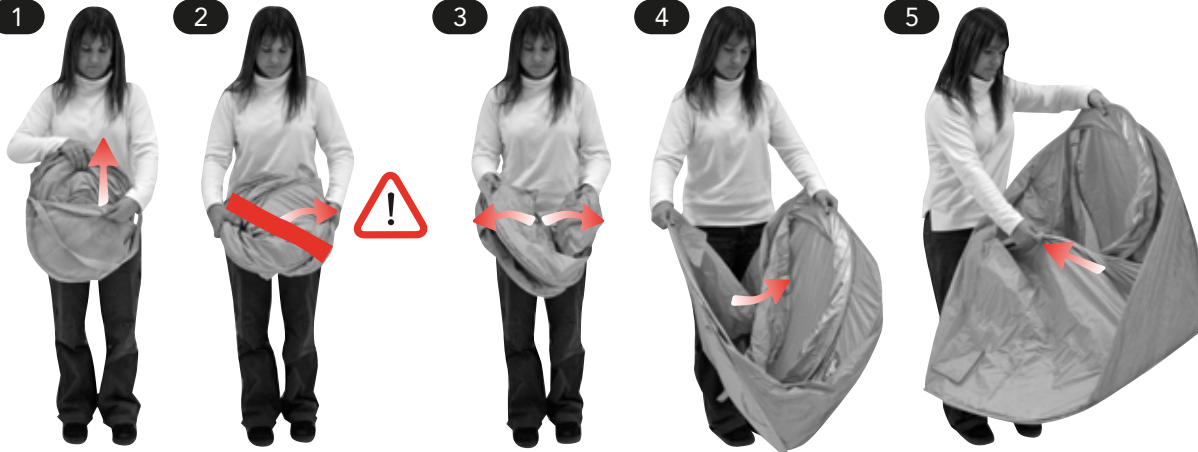
REF: INS.172SUN-EL 08/10/12

© 2012 Worlds Apart Limited, Design Right Worlds Apart Limited, All rights Reserved This product is patented. Worlds Apart Ltd. is the owner of Patent Nos. GB2365460, GB2355472, GB2369381, EP1094177, US6325086 and GB2340516

Assemble

PLEASE READ ALL INSTRUCTIONS AND WARNINGS BEFORE ASSEMBLY

Take care when folding/unfolding, this product contains an internal spring frame.



- Remove from bag.
- Remove red warning band.
- Carefully open out.
- Unfold.
- Pull out from corner.



- In soft ground secure tent with the four pegs provided.
- Alternatively the tent can be secured by filling the side pockets with sand.



- Fully assembled product.

WARNING!

⚠ This product has an internal spring frame that will 'pop' open with some force. NEVER let small children unfold or fold this product.

Designed for sun protection, place the back of the tent facing the sun for maximum protection. NEVER shelter in this product during a thunder storm. It is not waterproof or made for camping and could be dangerous during lightning.

Never allow a naked flame near this product - although made from fire retardant fabric, it will burn if left in contact with a naked flame.

Clean only with a damp cloth - other cleaning substances might render the flame retardant coating ineffective.

Only use this product on level ground, clear of any stones or other sharp objects.

Designed for general use - it is not waterproof or made for camping.

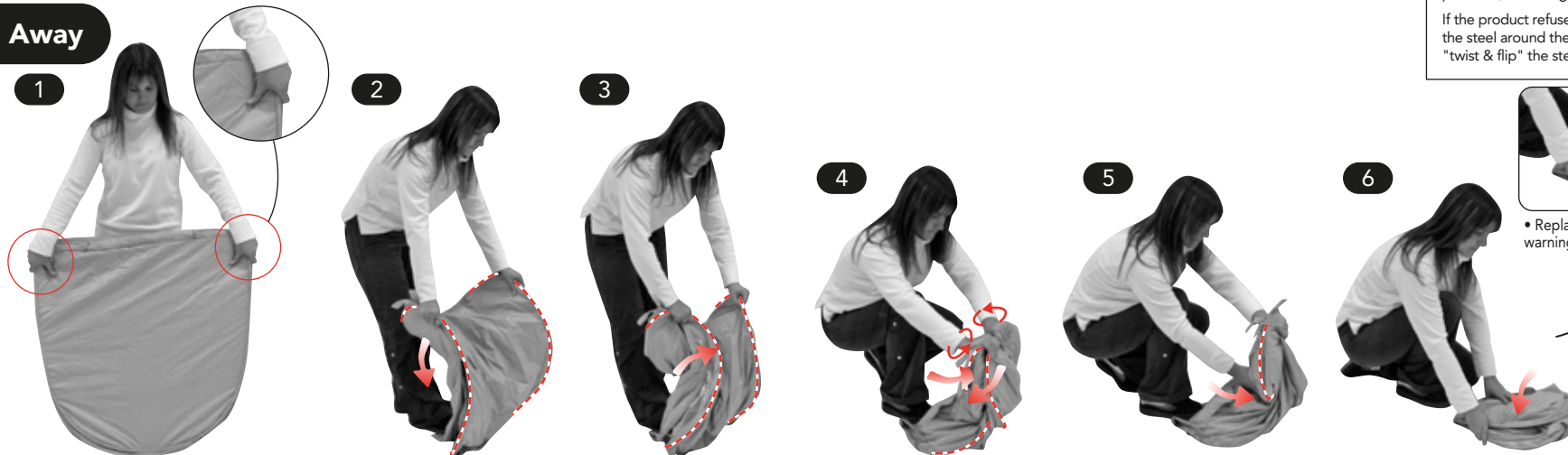
Do not continue to use this product if any part of the frame becomes either bent or broken, immediately contact Early Learning Centre in the event of a failure.

TIP

Product to be used in conjunction with regular sun protection products, including high factor sunscreen.

If the product refuses to "pop" back into shape - follow the steel around the frame sleeve with your fingers, and "twist & flip" the steel band back around into alignment.

Fold Away



- Fold tent flat (reverse stages 4 and 5 above).
- Hold as shown.
- Push down until the tent curves outwards.
- Still pushing down, twist the wrists inwards and allow one edge to overlap the other.
- Continue to twist the wrists allowing the edges to completely overlap.
- Twisting the wrists inwards, allow the back to flip down.
- Fold flat.



- Replace red warning band.



- Store in bag provided.